



Safety Drawing

“At Work, at Play, let Safety Lead the Way”
Due: January 10, 2012

Students must participate in the safety contest through a PTA/PTSA “unit in good standing”. All students who enter must be affiliated with a PTA/PTSA school.

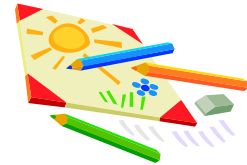
Students may enter in the appropriate grade division: Schools may submit one entry per division.

PRIMARY: Preschool - Grade 2

INTERMEDIATE: Grades 3 - 5

MIDDLE/JUNIOR: Grades 6 - 8

SENIOR: Grades 9 – 12



The **drawing theme** is “At Work, At Play, Let Safety Lead the Way”

Size: Drawings may not exceed 18 inches by 12 inches (including a mat if using). You may use regular paper, art paper, or poster board.

The drawing mediums include pencil, crayon, colored pencil, and markers.

Design: Lettering should be done by hand and should be neat and simple, with a minimum of words. Do not use stencils, magazine clippings or any kind of machine cut-outs. Only original artwork is accepted:

Important information to remember or check before submitting entries:



- Must be a unit in Good Standing
- Each entry must include a *signed by the student* entry form filled out in its *entirety*
- Local Unit information at bottom of student form *must* be filled out on each entry
- Local PTA Participation Form
- Safety poster entrants list is required with students names listed.

Submission

All entries must be judged at the local unit level before submission to the district for judging.

Entries are due: January 10, 2012 - General Meeting:

Amy Failla
3460 Johnette Street ,71107
318-868-1638 (H)
318-655-8030 (C).
Email: Noel1265@bellsouth.net

Kimberly Smith
278 Leo Avenue, 71105
318-866-0844 (H)
318-560-3444 (C)
Email: Kimberlysuzonne@aol.com

