



Caddo District PTA Newsletter

PTA[®]

everychild. onevoice.[®]

Affiliated State and National PTA
November 2008

Margie Rayburn, President
Issue #3

2008-2009 Caddo District Board of Directors

Officers

Margie Rayburn, *President*
Eppie Adams, *1st Vice President*
Lloyd Thompson, *2nd Vice President*
Tillie Cailleff, *Secretary*
Kay Robinson, *Corresponding Secretary*
Ann Wolf, *Treasurer*

Committee Chairs

Ann Wolf, *Budget and Finance*
Margie Rayburn, *Bylaws and Standing Rep.*
Burnadine Anderson, *Central Office Rep.*
Angie Wilson, *Child Welfare & Safety*
Pat Ellis, *Communication*
Elnora Corner, *Crisis Closet*
Diana May, *Directory*
Charlotte Echols, *Founders Day*
Ann Wolf, *Founders Day*
Diana May, *Founders Day*
Tillie Cailleff, *Grandparent Award*
Parlee Young, *Hospitality*
Letha Banks, *Hospitality*
Kim FitzGerald, *IRS Assistance*
Bonita Crawford, *Legislation*
Mariah Underwood, *Liaison Coordinator*
Bennie Dotie, *Elementary Liaison*
Earnestine Coleman, *Elementary Liaison*
Vera Jones, *Middle Liaison*
Parlee Young, *Middle Liaison*
Samuel B. Jones, *High Liaison*
Carol Fullilove, *Life Service Awards*
Kathleen Barbarousse, *Member scrolls*
Charlotte Echols, *Newsletter*
Louis Cook, *Program*
John Patterson, *Publicity*
Darlene Rossum, *Principals Luncheon*
Evelyn Mosley, *Principals Luncheon*
Karen Black, *Reflections Program*
Sandi Walton, *Reflections Program*
Stephanie Hyatt, *Registration*
Tammy Phelps, *School Board Rep*
Maria Casten, *Spring Fling*
Katie Colgin, *Teacher Appreciation*
Eppie Adams, *Webmaster*



President's Message

Again I will join 5 (five) PTAs that approach me to purchase a membership card at the next general meeting. The five schools which I purchased a card from at the October meeting



please bring my membership card to our next meeting.

It has come to our attention that some schools are using the Caddo Parish Schools EIN number to open checking accounts. One school received from their bank a notice that they owed \$114,000 in taxes to the Louisiana Department of Revenue. You must not use the Caddo Parish School's EIN number to open your checking accounts. All PTAs are to have their own personal EIN number to use for opening checking accounts for their school PTA. Please check with you bank and see if your checking account is open under the PTA schools EIN number. If you don't know what you EIN Number is please contact Margie Rayburn at 929-5313(H) or 428-4179(C).

What a wonderful Principals Luncheon we had today! It was a great success. We had over 300 PTA Principals, PTA Presidents, PTA Volunteers, Caddo Parish School Board Personnel, and School Board Members attending. This new location (East Ridge Country Club) was a wonderful venue to host this luncheon and we always have a wonderful time honoring our Principals. Caddo District PTA is very honored to host this event.

There are several schools that we do not have president's name and contact information. We need this contact information to send out newsletters and other PTA information, print in our Caddo District PTA Directory, share with the Louisiana PTA and National PTA's so that you may receive their mailings. Those schools are: Barret Elementary, Bethune 6th Grade Academy, Bethune Middle, Creswell Elementary, J. S. Clark Middle, Oak Park Elementary, Pine Grove Elementary, Vivian Elementary/Middle, and Westwood Elementary. If you have a president please send me their contact information so they can be added to the mailing list at the Louisiana PTA and National PTA.

Remember that Reflections entries are due at the next general meeting, November 11, 2008. Our meeting is one week later because schools will be closed on Election Day, November 4, 2008. **PLEASE EXERCISE YOUR RIGHT TO VOTE.** See you at the Caddo District PTA General meeting on November 11, 2008 at 9:30 a.m.

Margie Rayburn

Caddo District PTA, President



**Dr. Gerald Dawkins,
Superintendent**

From the Superintendent's Desk

Dear Caddo District PTA Leaders,

I have been humbled by your hospitality since my move to Caddo Parish. Thank you for your unwavering support for our children. They are fortunate to have you as advocates.

Our school leaders are equally as privileged to know that you are members of the educational support team. Your appreciation of our building-level leaders will be displayed at the upcoming Principals Luncheon. This yearly event is a very creative way to shine the light on our leaders and to encourage them as they tackle the awesome task of educating today's youth.

I look forward to visiting with the principals and with each of you at our school tables. I am told that each school has its own table for the principal, PTA president and special guests. It is easy for me to visit every table and be represented equally. You see, I am a card carrying member of EVERY PTA unit affiliated with the Caddo District PTA.

In addition to my membership, members of my educational cabinet, comprised of administrators at the Central Office, have also pledged their commitment to join the Caddo District PTA. We value the partnership with Caddo District PTA and promise to find additional ways to work together for all of the students in our school system.



TREASURER'S CORNER

The Treasurer should be given expense receipts for every PTA check written. These receipts should be attached to a check request/requisition and maintained in the Treasurer's records for audit.

**Ann Wolf
Treasurer**

Wednesday, October 8, 2008, Caddo Middle Magnet lost one of our very own. George Cloutier, a seventh grade student at CMM, passed away after a tragic accident while playing in his back yard. I want to thank the Caddo Middle Magnet faculty and staff for helping our students cope with this tragedy. I also want to thank Sharon Burford (CPSB Counselor Supervisor), Leisa Edwards (Middle School Director), our parents, students, faculty, and staff for their outpouring acts of kindness to one another and to the Cloutier family. Please continue to keep the Cloutier family in your thoughts and prayers . . .

Louis Cook, Principal
Caddo Middle Magnet

UNIT IN GOOD STANDING

Caddo District 1st Awards Deadline - November 11, 2008

Unit in Good Standing must be met prior to deadlines for entries to be eligible for Programs/Awards participation.

The following schools have met all of the criteria for "Units is Good Standing":

A. C. Steere Elementary
Arthur Circle Elementary
Blanchard Elementary
C. E. Byrd High
Caddo Middle Magnet
Caddo Parish Magnet High
Claiborne Fundamental Elementary
Donnie Bickham Middle
Eden Gardens Fundamental Elementary
Eighty-First Street ECE
Fairfield Elementary Magnet
Herndon Elementary/Middle Magnet
Judson Elementary Fundamental Magnet

Linwood Middle
Midway Elementary Prof. Development
North Caddo Magnet High
Northwood High
Riverside Elementary
Shreve Island Elementary
South Highland Elementary Magnet
Southern Hills Elementary
Summer Grove Elementary
Sunset Acres Elementary
University Elementary
Walnut Hill Elementary/Middle
Youree Drive Middle

A list will be placed in every newsletter with the names of the schools that are in "Good Standing". These schools are placed in the newsletter on October 26, 2008 if your school meets this criteria after that date I will announce you school's name at the general meeting on November 11, 2008. These schools may participate in the Reflections' Program.

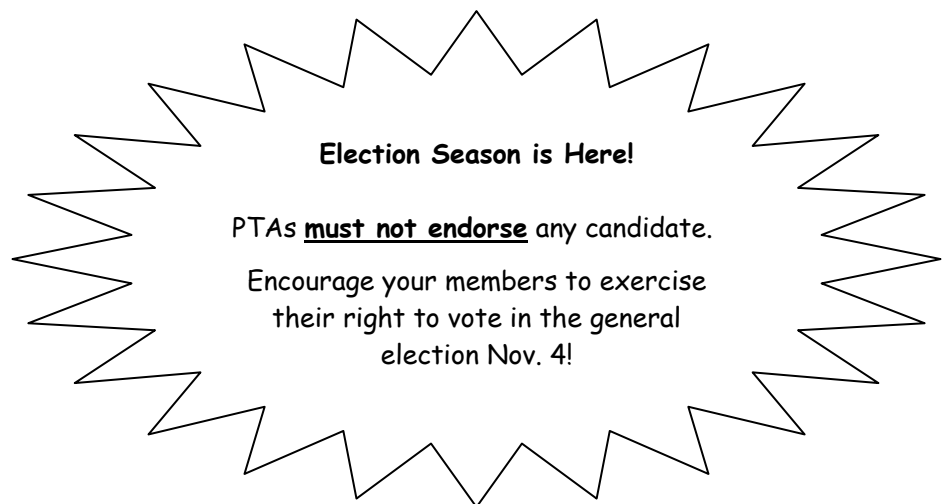
ALL SCHOOLS NEED TO BE FILING A 990-N(E-Postcard), 990EZ or 990

Small tax-exempt organizations whose gross receipts are normally \$25,000 or less may be require to electronically submit Form 990-N; also know as the e-Postcard. The Pension Protection Act of 2006 added this filing requirement to ensure that the IRS and potential donors have current information about their organizations. The first e-Postcards are due in 2008 for tax year ending on or after December 31, 2007. The e-Postcard is due every year by the 15th day of the 5th month after the close of your PTA's tax year. Most PTAs in Caddo District must file this e-Postcard. Only a few units make over \$25,000 in Gross receipts.

Schools with greater gross receipts must file a 990EZ or a 990. The 990EZ is for schools with gross receipts of \$25,000 or more but less that \$ 100,000 gross receipts and school with gross receipts of \$100,000 must file a 990.

If you have not filed your 990N (e-Postcard) I have developed information that will easily make this process go smoothly for you. The PTA President's that I have e-mail address I have already sent this information by e-mailed to them. I will send the information out to all schools no later than the first of November.

Any school not filing within the next three years will lose their no-profit status for the Internal Revenue Service.





Membership Matters

Eppie Adams, 1st V.P. Caddo District PTA/Membership

Caddo District PTA is pleased to have 13, 625 memberships as of October 15, 2008. Keep up the good work!

We'll be using this space for ideas on not only how to generate PTA Membership, but also how to bring together parents, educators & students as a PTA or PTSA. So, how to address some common "roadblocks" when it comes to parental volunteering:

Roadblock: Some parents believe they have talents but don't know whether they are needed or how to contribute them to the school or PTA.

1. Detour:

- a. Don't wait for parents to offer to help; seek them out. Suggest a few different but specific options of ways they could volunteer.
- b. Have teachers and administrators create a list of specific volunteer actions that are needed from parents. Refer to this list and share it with your PTA. (This is where the 3 for Me Program comes into play).
- c. Ask non-PTA parents as well as members what they'd like to do in the school.
- d. Faculty and parents could share their list with each other and begin to discuss and form realistic expectations to more effectively use parents' many talents.

Roadblock: Parents without adequate resources often feel overwhelmed.

Families suffering from economic stress must address their own needs for food, clothing, and shelter before they can see clear to become more involved in their children's education.

1. Detour:

- a. Ask the parent or guardian about their situation and listen to them.
- b. Assign a "buddy" who understands the situation or language to help connect the family to the school.
- c. Provide information to help parents access and secure the health and social services they need for themselves and their families.
- d. Schools can work out agreements with social service and health agencies to provide services at the school through school-based clinics or near the school in community-based clinics.
- e. Schools can develop and distribute to parents a directory containing information on available services and resources in the community and how to access them.
- f. After families' personal needs are met, schools can then help parents become involved in the education of their children

Membership cards are only \$2.75 and must be issued to every paying member. Each card comes with the added bonus of membership in Caddo District, Louisiana and National PTA. Cards are available at any District General Meeting or by contacting Eppie Adams (687-0442 or web@caddodistrictpta.org). Please make checks payable to LA PTA. With two to three days notice your Unit Name and LUR Number can be printed on your cards!



Renaissance

On September 26, 2008, 275 Northwood students were honored at the Renaissance Awards Assembly. "Renaissance" is a national program designed to help high schools promote and achieve academic excellence. Students, teachers, staff, parents, local businesses and the community work together to recognize students' academic achievement by awarding them incentives and rewards. Our Renaissance program offers 4 levels of recognition:

Platinum: (18 STUDENTS AWARDED)

- No suspensions
- Straight A's

Gold: (41 STUDENTS AWARDED)

- No suspensions
- GPA of 3.75 or higher

Teal: (202 STUDENTS AWARDED)

- No Suspensions
- GPA of 3.00-3.74

Orange: (14 STUDENTS AWARDED)

- No suspensions
- increased GPA 0.5 or greater

Awards & Accolades

Susan Tompkins, Gifted Math, Geometry, and Webpage Design teacher at Northwood was awarded a \$750.00 grant from the Alliance for Education. The grant will be used to purchase a Mimio System, which is a product that turns any flat surface into a SmartBoard.

Reminder: Set your clock back at Midnight Saturday, November 1, 2008.



Directory Additions and Corrections

The 2008-09 Directories were distributed at the October General Meeting and through the gray box. If any school principal or PTA president has not yet received a copy, please contact Diana May at dianamay@bellsouth.net or call 687-3472. If your information is incorrect or you need to change information at any time, contact Diana May or President, Margie Rayburn. Please make the following additions and/or corrections to your new Caddo District PTA Directory:

Inside front cover - LA PTA Office Hours-
Monday, Tuesday, Thursday & Friday
9:00 AM – 1:00 PM

Page 9 - Caddo District Board of Directors –
Founders' Day Chairs – Charlotte Echols,
Diana May, & Ann Wolf

Page 10 – Caddo District Board of Directors
Liaison Elementary School Units –
Earnestine Coleman
2513 Huston Street, Shreveport, 71103
(h) 635-3851; (f) 635-9194; (c) 286-4095
Email – colemantray1@bellsouth.net

Page 11 – Caddo District Board of Directors
Program: Louis Cook

Page 11 – Caddo District Board of Directors
Principals' Luncheon
Delete -Darlene Rossum's cell
Evelyn Mosley –(c) 455-1468

Page 14 - Blanchard Elementary –
E-mail for president: cgaskin@wkhs.com

Page 14 – Booker T. Washington High
President – Karla McCullough Belcher
3935 Michigan Circle, Shreveport, 71109
(h) 635-4468; (w) 221-1943; karlamac@bellsouth.net

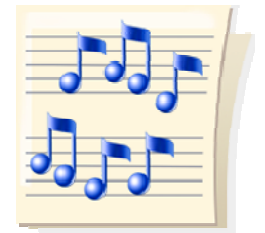
Page 20- Newton Smith Elementary
President's phone (h) 929-2164

Page 20 – North Caddo High
President's city is Vivian, 71082

Page 24 – Sunset Acres Elementary
Delete president's home phone
President's E-mail – scampbell@caddo.k12.la.us

Diana May, Directory

“Wow!”



The opportunity to showcase your students’ talents deadline is fast approaching! All entries are due on November 11. Karen Black and Sandi Walton will accept entries before and after the November General Meeting starting at 8:30am. We encourage you to bring your entries in a portfolio. You can make a simple one by taking two pieces of poster board and taping them on three sides using a strong tape i.e., duck tape. Please mark the outside of the portfolio with your school name and contact information.

The theme for 2008-2009 is “Wow!” Each entry should be inspired by and reflect this theme. Students, kindergarten through 12th grade, may submit original works in the six art area.



- Literature
- Musical Composition
- Photography
- Visual Arts
- Dance Choreography
- Film Production



It is important to note that each category has *specific rules* as well as general participation rules that *must* be followed. It is very important that the students adhere to these rules. If they do not, the entry will be disqualified. This information is available by visiting the Caddo District PTA website at www.caddodistrictpta.org, in the Presidents Handbook or Reflection information packet provided at the summer workshop.

Important information to remember or check before submitting entries:

- Must be a unit in Good Standing
- Each entry must include a *signed* student entry form filled out in its *entirety*
- Local Unit information at bottom of student form *must* be filled out on each entry
- Local PTA Participation Form
- Entrants list required for each category

Essential points

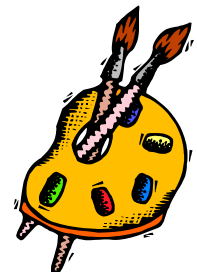
- ✚ A limit of **FOUR (4)** entries per grade division per category
- ✚ Entries must be the **ORIGINAL** work of student
- ✚ All entries will be judged on interpretation of the theme
- ✚ All entries **MUST BE** accompanied by an **OFFICIAL ENTRY FORM**
- ✚ Each entry form **MUST BE completed** in its **ENTIRETY**
- ✚ Program deadline for submission of entries **MUST** be adhered to
- ✚ The local unit **MUST BE** in **GOOD STANDING** in order to submit entries for judging



If you have any questions, feel free to contact us.

Karen Black
Reflections Chair
karenanneblack@aol.com
861-7555
422-9401

Sandi Walton
Reflections Co-Chair
Sandiree5@aol.com
636-5374
470-4409





Sheriff's Safety Town.....

Scheduled to open this November, Sheriff's Safety Town will help youngsters from Caddo Parish and surrounding areas learn safe practices and incorporate them into their daily lives. The program will include safety lessons in the following areas: pedestrian, bicycle, motor vehicle, school bus, railroad, fire, electrical, gun, and stranger danger, as well as 9-1-1 familiarization.

Prior to visiting Safety Town, students will be introduced to each of these safety-related areas over a two-week period in their Civics classes at each of their respective schools. There, they will familiarize themselves with safe and unsafe behavior through reading and performing a variety of written activities. Then, the children will spend a day at Safety Town, where they will apply good safety practices in a controlled, virtual setting. Children will demonstrate how to safely interact with others when on foot, on bicycles, and in motor vehicles. Also, they will demonstrate how to properly use the 9-1-1 system through the use of a 9-1-1 simulator. They will demonstrate good safety practices through the aid of a real school bus, a seat belt simulator, a functional railroad crossing, a fire house, an electrical power station, and other such items.

Sheriff's Safety Town has two benefits that distinguish it from other Safety Towns, Cities and Villages across the nation. The first benefit is the degree to which the schools are actively involved in this program. Instead of relying on instructors at Sheriff's Safety Town to provide all the instruction, each second grade Civics teacher is responsible for teaching the children what they need to know to be safety-minded, and then only after these lessons have been taught do the children visit Safety Town and apply what's been learned. In other locations, the schools are responsible for providing transportation to and from the site, only. The second benefit is that we will be able to quantify what's learned by our participants by comparing pre and post-test figures. Other sites often base their success on how many participants they have, not on test figures.

Another plus for our community is the positive bond that will be established between first responders (i.e., area law enforcement and firefighters) and our area youth. Sheriff's Safety Town will be staffed by Caddo deputies, Shreveport firefighters, and Louisiana State troopers. Children will have first-hand interaction with and learn from these men and women in uniform, each tasked with providing our children with a safe environment in which to learn and grow.

Our community has united to create a fun, interactive environment in which to provide our youth with the tools necessary to be safety-minded, Sheriff's Safety Town. The Parent-Teacher Associations throughout Caddo Parish have helped make this wonderful program a reality, and soon they will play a vital role in its success. Thank you for your support.

Sergeant Richard Corbett
RCorbett@CaddoSheriff.Org
318-455-5761

Tom Watts—Director of the Renewal Team and sponsor of the We Care” program will be the guest speaker at the next Caddo District PTA General Meeting, November 11, 2008.

Louis Cook, Programs Chair





*Caddo District PTA
P. O. Box 32000.
Shreveport, LA 71130-2000*

NON-PROFIT ORG
US POSTAGE
PAID
SHREVEPORT LA
PERMIT #288

*Margie Rayburn, President
Charlotte Echols, Editor*

Calendar of Events



November

- 1 Reflection Theme Search Due to State
- 4 Presidential Election, **Schools Closed**
- 11 Caddo District PTA General Meeting – 9:30 am, CPSB Board Room
- 11 Reflections Entries Due (4 per division allowed)
- 18 Caddo District Board of Directors Meeting – 9:30 am, CPSB Board Room
- 24 – 28 Thanksgiving Holidays, **Schools Closed**

December

- 15 Deadline for 100% Early Bird Award
- 22 – Jan 2 Christmas Holidays, **Schools Closed**

